



# Classic FX 90



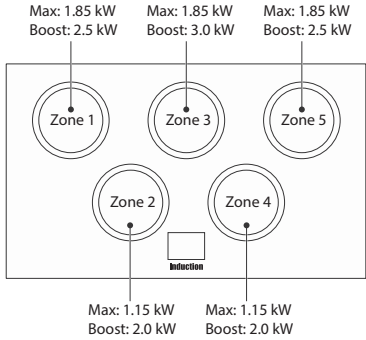
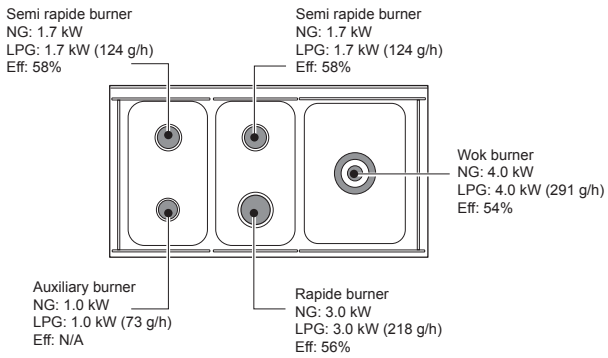
Performance | Design | Style

KEY FEATURES



- Large electric single cavity multifunction oven with 2 fans and 7 functions
- Energy saving panel (E.S.P.) to create a small multifunction oven (7 functions)
- Integrated grill with pull-out cradle with two grill pans with trivets
- Triple-glazed dropdown oven door
- Hob options:
  - Gas hob with 5 burners, including a powerful multi-ring burner, a wok cradle and a Teppanyaki griddle
  - Induction hob with 5 cooking zones, a power boost function; automatic heat-up, two low temperature setting - L1 (approx. 40 °C ideal for gently melting butter or chocolate) and L2 (about 90 °C perfect for simmering of soups, sauces and stews), a pan detector indicator for each zone, a residual heat indicator and a child lock

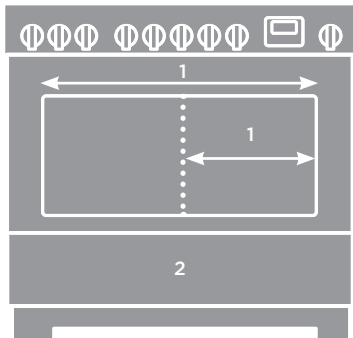
HOB OPTIONS



People with cardiac pacemakers or implanted insuline pumps must make sure that their implants are not affected by the induction hob.

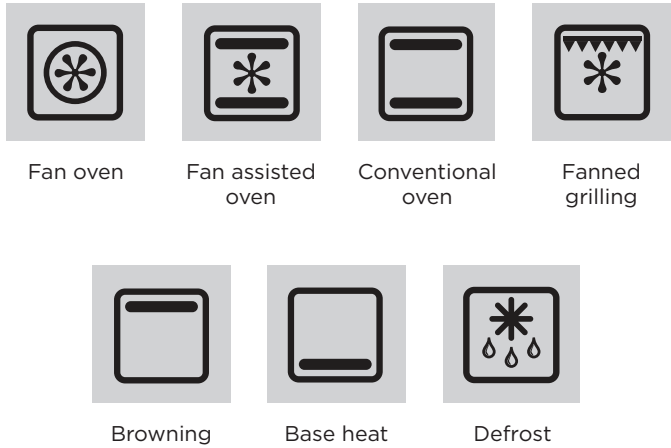
OVEN CONFIGURATION & FUNCTIONS

CONFIGURATION

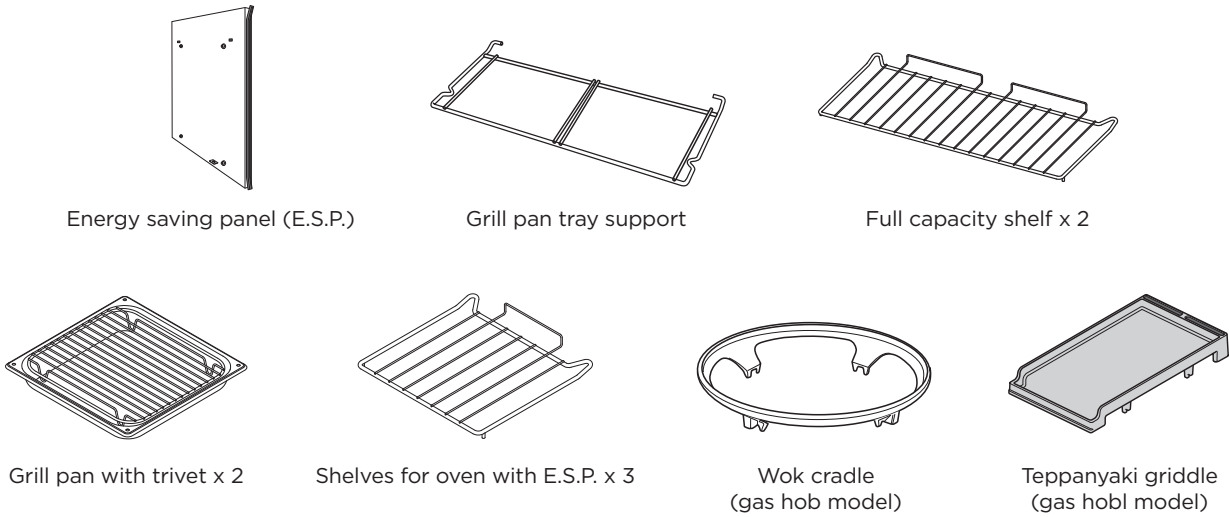


**KEY**  
1. Multifunction oven 2. Storage drawer

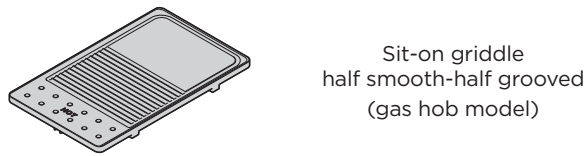
FUNCTIONS



ACCESSORIES - INCLUDED



ACCESSORIES - OPTIONAL EXTRAS



COLOURS



Trim: Chrome or Brass

SPECIFICATIONS

Model	CLASSIC FX 90	CLASSIC FX 90
Hob fuel type	GAZ	INDUCTION
Product reference	CLAS90FXDF	CLAS90FXEI
Width (mm)	900	900
Height to hotplate (mm) min / max	905 / 930	905 / 930
Depth excluding / including handles (mm)	607 / 669	607 / 671
Weight (kg)	123	117.17
Electrical ratings specified at 230VAC	1.00	1.15 / 2.00
	1.70	1.85 / 2.50
	1.70	1.85 / 3.00
	3.00	1.85 / 2.50
	4.00	1.15 / 2.00
Total hob rating (kW)	11.40	7.40
Maximum electrical load (kW @ 230V)	3.65	11.05
Grill	Integrated / Full & With E.S.P.	Integrated / Full & With E.S.P.
Grill power rating (kW)	3.50	3.50
Max. oven temperature °C	240	240
Dimensions - Full oven (WxHxD mm)	752 x 377 x 402	752 x 377 x 402
Capacity - Full oven (litre)	114	114
Dimensions - Oven with E.S.P. (WxHxD mm)	363 x 393 x 396	363 x 393 x 396
Capacity - Oven with E.S.P. (litre)	49	49
Energy rating	A	A
Oven shelves	Full: 2 With E.S.P.: 3	Full: 2 With E.S.P.: 3
Pan supports	Cast iron / Removable	-
Clock/Timer type	3 Rotary / White display	3 Rotary / White display
Oven light	Full: Yes / With E.S.P.: Yes	Full: Yes / With E.S.P.: Yes
Oven liners	Enamel	Enamel

Oven dimensions are for information only; they should not be used to define oven cookware dimensions. All our range cookers are delivered without a power cable.



# Performance | Design | Style



Distributor / Dealer information

[agafalcon.com](http://agafalcon.com)

Copyright © AGA Rangemaster Limited 2023  
Brand names, words and logos are registered trademarks of AGA Rangemaster Limited

Falcon is a trading name of AGA Rangemaster Limited  
Registered in England and Wales under registration number 3872754  
Registered office: AGA Rangemaster, Meadow Lane, Long Eaton, Nottingham, NG10 2GD, United Kingdom

Falcon continuously seeks improvements in specification, design and production of products and thus, alterations take place periodically. Whilst every effort is made to produce up-to-date literature, this brochure should not be regarded as an infallible guide to current specification, nor does it constitute an offer for the sale of any particular appliance.



02/2023 D008395